



SMART GRID ENHANCED WITH ARTIFICIAL INTELLIGENCE

DL SGWD-AI



WHY A SMART GRID ENHANCED WITH AI?

Since the early 21st century, opportunities to take advantage of improvements in electronic communication technology to resolve the limitations and costs of the electrical grid have become apparent.

Technological limitations on metering no longer force peak power prices to be averaged out and passed on to all consumers equally. In parallel, growing concerns over environmental damage from fossil fuel-fired power stations have led to a desire to use large amounts of renewable energy.

Dominant forms such as wind power and solar power are highly variable, and so the need for more sophisticated control systems became apparent, to facilitate the connection of sources to the otherwise highly controllable grid. Power from photovoltaic cells (and to a lesser extent wind turbines) has also, significantly, called into question the imperative for large, centralized power stations.

The rapidly falling costs point to a major change from the centralized grid topology to one that is highly distributed, with power being both generated and consumed right at the limits of the grid. Growing concern over terrorist attack in some countries has led to calls for a more robust energy grid that is less dependent on centralized power stations that were perceived to be potential attack targets.

The integration of Artificial Intelligence (AI) module, such as **DL AI-MODULE**, plays a crucial role. Advanced **AI** algorithms can analyze vast amounts of data from distributed energy resources, optimizing energy production and consumption in real-time.



SMART GRID

By predicting demand patterns and integrating renewable sources effectively, **AI** can enhance grid stability and reduce reliance on fossil fuels.

Furthermore, **AI** can facilitate proactive maintenance and fault detection, minimizing downtime and ensuring a more resilient energy infrastructure. It will enable personalized energy management solutions for consumers, promoting energy efficiency of the power system.

WHAT IS A SMART GRID?



The Smart Grid is a system for an "intelligent distribution" of electricity, able to know the consumption of the various end users and to manage the generation and distribution of electricity according to demand. Simply put, if in each area we have a potential overload of energy, the excess energy can be redistributed to other areas that need it, based on the actual requests from end users.

Furthermore, the software that runs the Smart Grid monitors the electrical flow of the system, integrates renewable energy into the network and activates/suspends the industrial or domestic processes during periods when electricity costs less/more. The smart grid knows our requirement of power consumption. When the demand for electricity is at its maximum, the smart grid automatically adapts to the demand by picking up excess energy from many sources to avoid overload problems or interruptions of power.

It has, therefore, the function of sharing electricity that is generated from various sources, both public and private, traditional and renewable, and ensures that electrical devices use electricity as efficiently as possible.



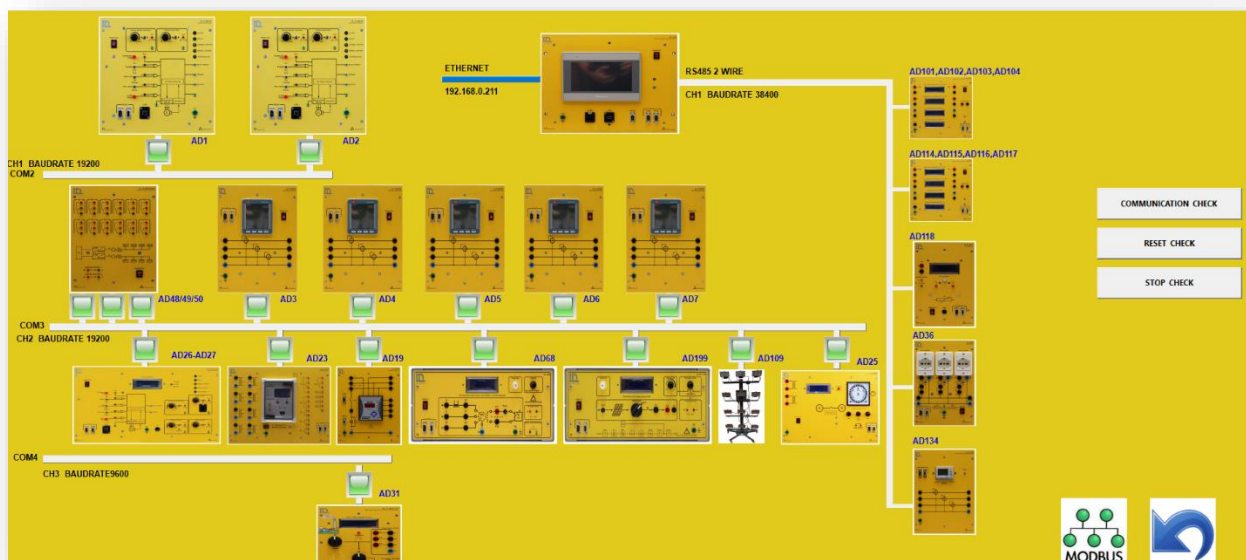
OPEN SCADA-WEB

The full system is integrated by an industrial Supervision and Control Data Acquisition (SCADA) software that communicates with all the active devices in the trainer and performs the following actions:

- Acquisition and measurements of the physical quantities of the system;
- Control of the system's operation;
- Visual supervision of the system (also in remote mode), using synoptic diagrams: operational status, alarms, etc.

Through the SCADA software, the operator can monitor the electric flow in the system to manage and optimize the power requirements based on the consumption, through the acquisition of real-time data from the measuring devices and protection relays and the control of actuators for an "intelligent" management of the whole electrical system.

The different sections of the trainer communicate through dedicated serial RS485 buses using standard industrial communication protocols such as MODBUS RTU.



The SCADA project is divided into templates each one corresponding to a particular exercise. The open SCADA-WEB developers license provided with the trainer allows the teachers to fully customize the existing templates or create new ones that can be used to monitor the system from a local workstation.

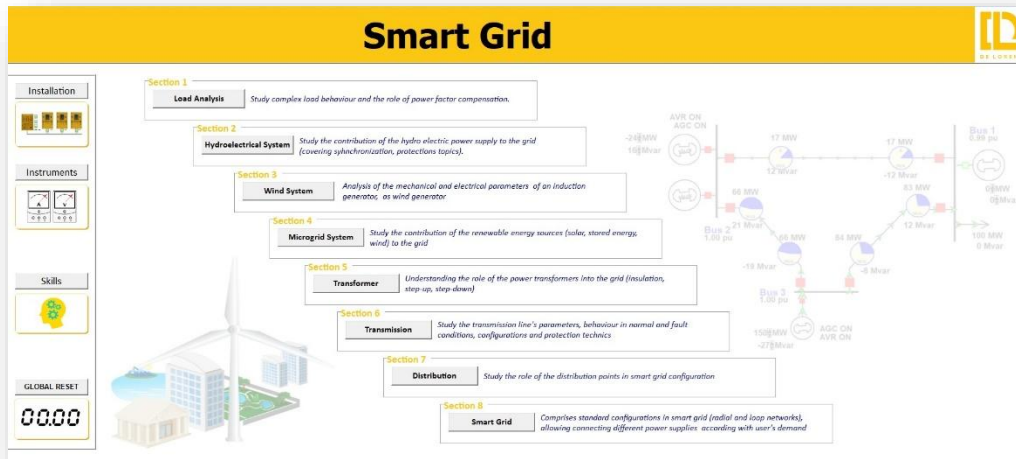


SMART GRID

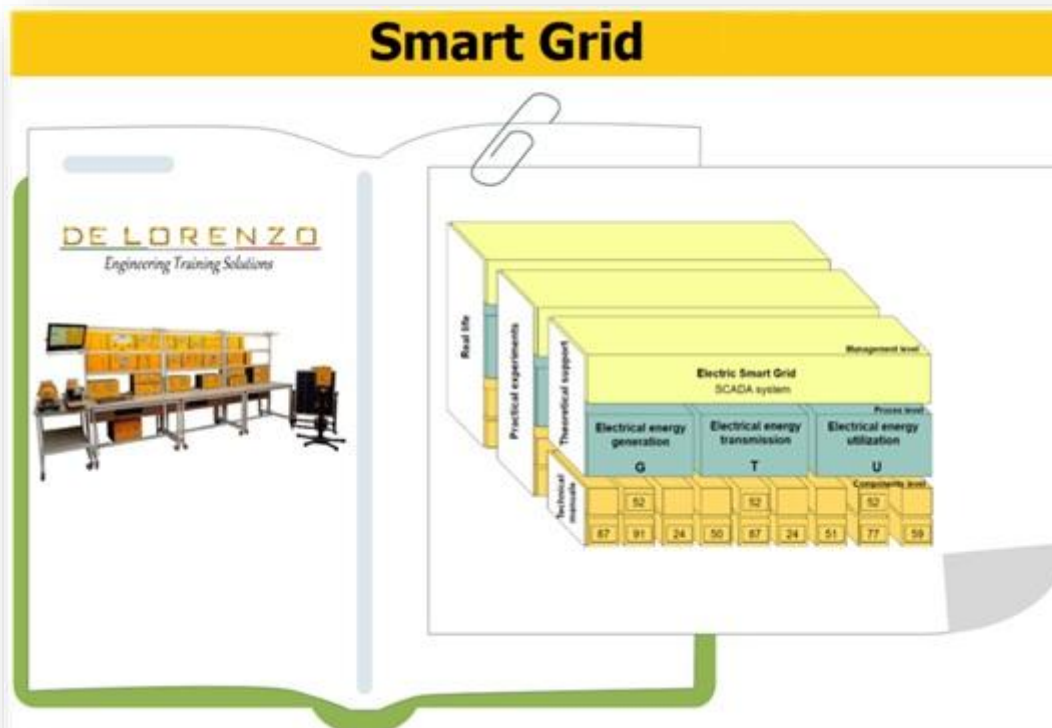


SCADA main features

The software is structured following a didactic approach, dividing each study unit into single exercises.



The open SCADA-WEB license gives the teachers the possibility to create their own projects and fully customize the experiments by displaying the parameters of interest and controlling the actuators for an “intelligent” power management.

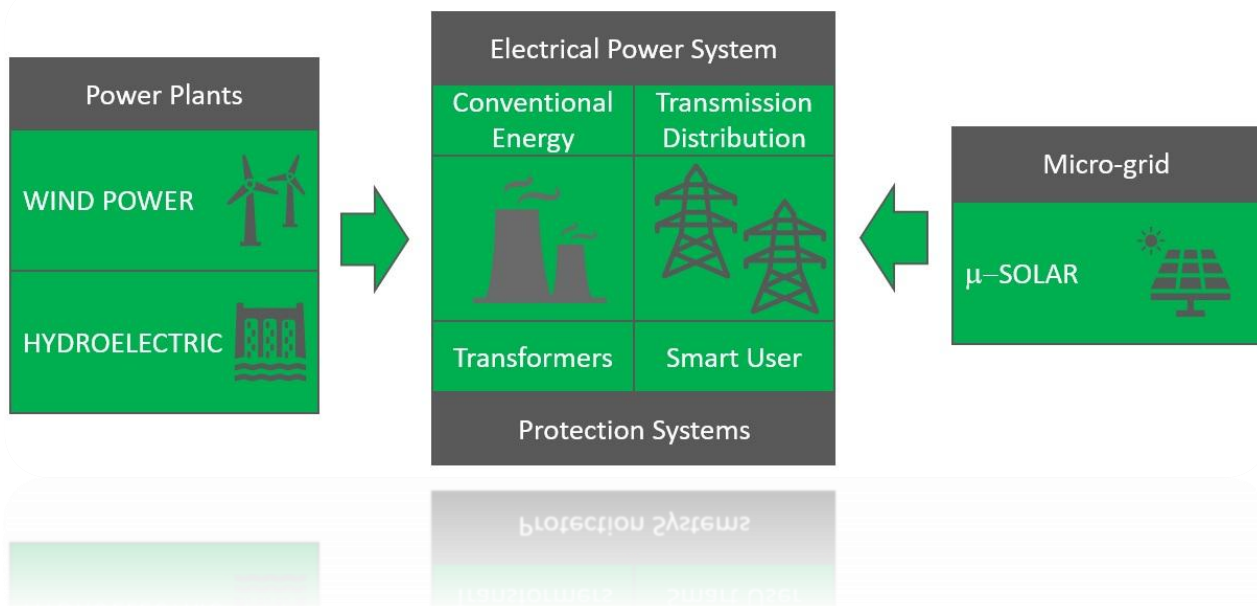




SMART GRID



DE LORENZO's SOLUTION



The smart grid system developed by De Lorenzo can be organized in **eight subsystems**, each comprised of several modules. The first four subsystems are simulations of energy sources; the first one is the main power supply of the grid with a three-phase supply unit that represents a coal plant.

The other three subsystems correspond to alternative sources of energy: wind, hydroelectric and solar. The wind plant simulation is made with a three-phase induction motor acting as a generator while the hydroelectric plant simulation is made with a three-phase synchronous machine, additionally with a generator synchronizing relay module to make possible the connection to the grid. Finally, the solar energy part of the system is generated with a solar panel and twelve dimmable lamps simulating the sun, which is connected to an inverter module that allows the energy generated to be transferred to the grid.

A fifth subsystem in the smart grid consists of modules for fault protection; the modules are a feeder manager relay that measures in real time voltages and currents to detect faults in the grid and four power circuit breakers controlled by the previous module to disconnect faulty lines.

The sixth subsystem refers to modules for measuring; it has three maximum demand meters that measure AC voltages, currents, frequencies, active power, reactive power, apparent power, power factor and THD for each of the three available phases in the grid and two electrical power digital measuring units that, besides measuring the same as the previous module, make measurements of DC voltage, current, power and energy.

The seventh subsystem is for power factor control with 2 modules, the first one is a switchable capacitor battery with four different values of capacitors and the second one is a reactive power controller that activates the capacitors of the previous module to make a power factor correction.

The last subsystem is composed of passive elements; three modules with different kind of loads (capacitive, inductive, resistive) that simulate the loads in a house or factory and two modules with impedances simulating the losses generated in transmission lines, specifically in lines of 10 and 100 km length.

A **SCADA** software provides to the acquisition and storage of the data coming from the measurement



SMART GRID



instruments and to the control of the actuators for an “intelligent” management of the whole electrical system. The SCADA software can also be supplied on request in an OPEN version, so that the teacher can implement his own project and select modes and procedure for visualizing the parameters and controlling the actuators.

Artificial Intelligence plays a crucial role, it influences various techniques to enhance the efficiency and reliability of the electrical grid. By applying supervised learning, reinforcement learning, and anomaly detection, these experiments optimize energy consumption, predict renewable energy generation, and improve grid stability. **AI** enables fault detection, proactive maintenance, and intelligent load control, reducing downtime and enhancing resilience. At the end of the **Experiments** section, you will find detailed descriptions of each experiment, including their **AI** area and machine learning category.

The system described above represents the basic configuration of our laboratory (**DL SGWD-AI**).

Optionally, it is also possible to add an additional wind energy small scale generation system, with a real wind turbine connected to an inverter module to make the connection to the grid (**DL SGWD-W-AI**).



SMART GRID

TRAINING OBJECTIVES



Special configuration prepared for an exhibition

The Smart Grid trainer can be considered a **multidisciplinary laboratory**, it allows studying and exercising different technical subjects, that are then integrated into a full Smart Grid system setup.

The Smart Grid trainer is an integrated laboratory that can be useful for a huge number of undergraduate and graduate courses in the engineering school. The laboratory equipment can be configured to create different exercises, which reinforce basic and advanced concepts in electric energy. The equipment can be interconnected to form a **full smart grid system**. However, as you can see from the list of experiments in the next paragraph, conventional topics, such as electric machines, distribution systems and so on, could be covered by the Smart Grid trainer; this innovative laboratory can include class demonstrations and laboratory experiments under regular laboratory classes.

There are fundamental topics that are needed for understanding the smart grid concept and they must relate to real life situations, yet a set of different topics could be added to get a special curriculum. The **core topics** include electric circuits, electric machinery, hydroelectricity, wind energy, photovoltaic solar energy, renewable energies, power transmission, power distribution.

Furthermore, **additional courses** can benefit from the smart grid trainer, such as, for example: power system engineering & analysis, electric machines, linear control systems, electrical distribution engineering and smart grids automation, power generation operation and control, power electronics, cost and construction of electrical supply, power system stability, optimization methods, stochastic processes, embedded systems.



SMART GRID

The smart grid system can be used by mechanical and electrical engineering students as a longtime project as it comprises enough elements to cover most of the topics listed above.

Electric circuits' particular subjects can be studied through load modules, enabling the full understanding of resistive, capacitive and inductive loads, fed by AC or DC supply. Protected equipment permits the application of domestic and industrial rated electric magnitudes as well as their instrumentation. Effects of inductive loads and power factor correction are issues which can also be addressed.

The study of AC electric machinery can also be complemented with the practical insight provided by the induction and synchronous generators used to emulate a wind and a hydro-electrical power plant respectively.

Synchronization methods, power and instrumentation transformers, and the inner physical phenomena can be measured and studied as individual elements or as part of the whole power distribution system.

The entire system can be tested under many considerations as it is configurable, so different experiments can be driven based on the same principles. When analyzing distribution systems and fault schemes, the instrumentation and logical equipment can provide enough flexibility to understand the process between power generation and usage, together with abnormal events and their respective protective relaying issues. In this way, the topics added in the curricula which regard power management and distribution can also find room in the integrated smart grid project, which can be also evaluated under efficiency concerns depending on load conditions or generators' states.

In this way, the smart grid as a set of individual modules or, enables the student to move towards a single objective necessarily going through each individual area, making possible the full understanding of smart grid theory, application, and capabilities, as well as the concerning steps of its integration.

The Smart Grid trainer also allows us to understand **advanced topics** like energy production in wind plants that are connected to the main electric grid, or they can be isolated as micro-grids, so the students can comprehend real problems in engineering which are imperative in the energy progress; thus, the basic and advanced courses can be combined in the wind turbine system. For example, wind generators include a pitch controller that increases energy efficiency, and the energy generated is sent to the central electric grid; hence, the students must use several topics such as control systems, digital control, electric machines, and so on.

As an additional example, a combination of 3 energy sources can be studied when they are providing energy to the load. If the conventional source is combined with wind and hydro energy, the student will be able to understand in a clear manner the process of providing energy to the load by alternative energy. Moreover, environmental questions can be included in the exercise (carbon footprint).

The number of exercises and topics can be expanded, and the student is able to propose novel ideas about how to solve problems that affect society; hence, the motivation of student can be increased.

In conclusion, engineering courses need to cover experimental concepts that increase the engineering knowledge of students, but it is not easy to find experimental systems that allow them to combine those concepts.



SMART GRID



Although Smart Grid is a quite complex problem that is impacting electrical energy, it could be used for leaning basic concepts like electric circuits; hence, this system includes all the elements for providing real experience in the mechanical and electrical engineering curricula and impact the advanced and basic topics in the curricula. Smart Grid is a perfect system for teaching and involving students in experimental engineering problems. Besides, the student can deal with ecological and economic problems. The experimental use of solar and wind energy provides information about how the alternative sources of electrical energy can be used in large and low scale.

Our proposal includes exercises with Smart Grid on different topics; thus, this system is the conductor for connecting theoretical and practical concepts.



SMART GRID

LIST OF EXPERIMENTS

HYDROELECTRICAL SYSTEM

Brushless
Generator no load characteristic
Generator load characteristic
Regulation performances characteristics
Automatic synchronization
Overcurrent protection
Over-voltage or under-voltage protection
Over-frequency or under-frequency protection

WIND SYSTEM

Relation between a pitch control system and wind
Analysis of the mechanical parameters within an induction generator
Analysis of electrical parameters within an induction generator

PHOTOVOLTAIC SYSTEM

Characterization of a photovoltaic panel without a load
Characterization of a photovoltaic panel with a load
Connecting a photovoltaic system to the real network by using an inverter grid system mono phase.

TRANSFORMER

Vector group
No load performance
Load performance
Asymmetrical performance
Regulation performance

TRANSMISSION

No-load performances
Matched-load performances
Ohmic-inductive load
Ohmic-capacitive load
Automatic compensator
Transmission line radial network
Transmission line meshed network
Transmission line: fault-to-earth and protection
Transmission line: earth fault protection
Transmission line: under voltage protection
Transmission line: over voltage protection



SMART GRID

SMART GRID

SMART GRID

Contribution of solar energy

Contribution of hydropower

Contribution of wind plant

SMART GRID ENHANCED WITH ARTIFICIAL INTELLIGENCE

Energy Consumption Prediction

Fault Detection in the Grid

Optimization of Renewable Energy Usage

Power System Stability Analysis

Intelligent Load Control

Wind Power Generation Prediction

Solar Power Generation Prediction

Transformer Anomaly Detection

Power Quality Classification

AI-Based Microgrid Simulation





SMART GRID

SMART GRID ENHANCED WITH AI

AI is revolutionizing the energy sector by improving efficiency, reliability, and sustainability. This study presents a series of AI-driven experiments focused on key challenges, such as energy consumption prediction, fault detection, renewable energy optimization, and grid stability.

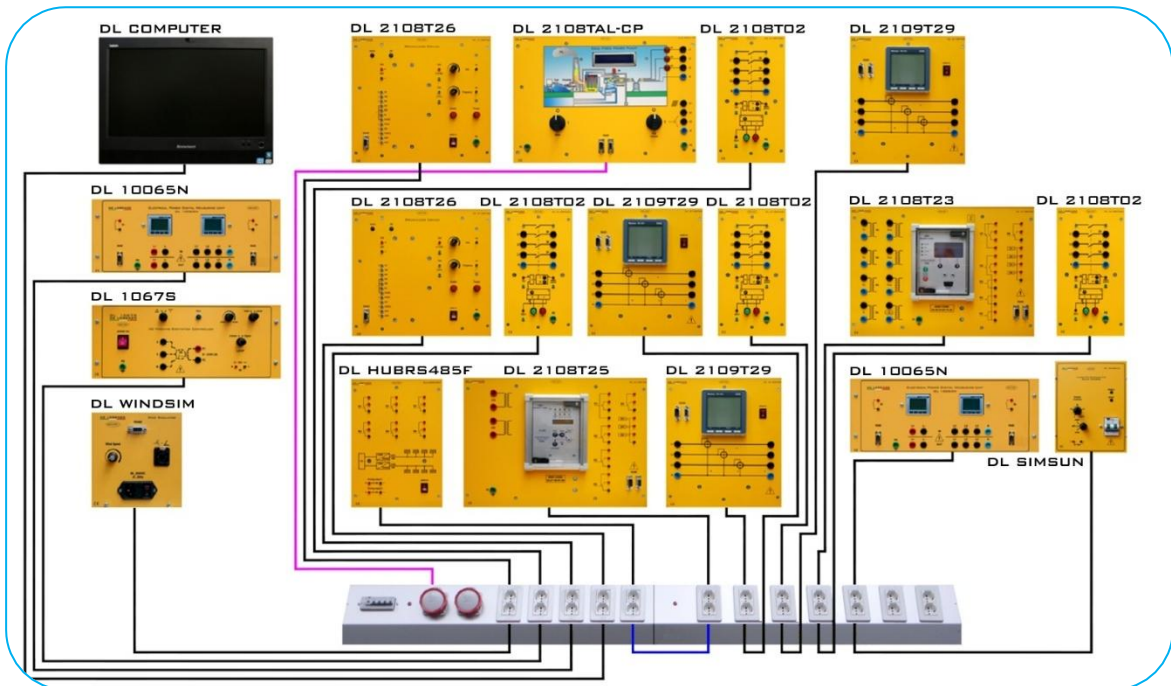
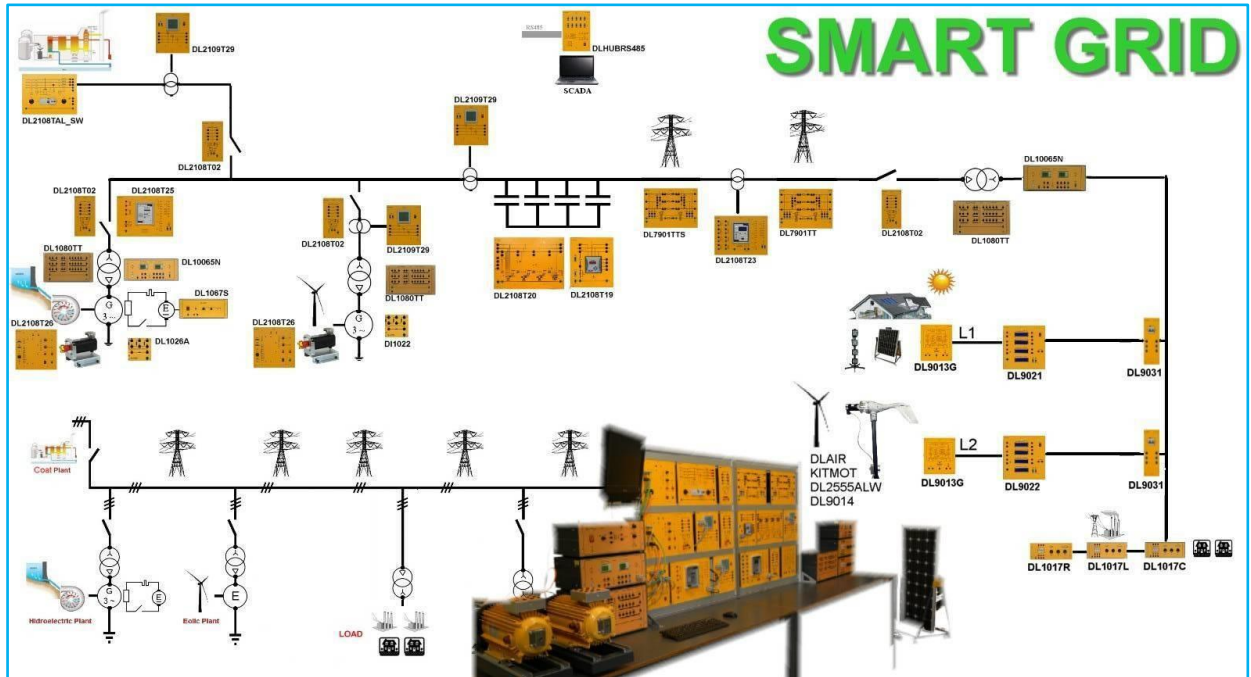
Using advanced techniques including supervised learning, reinforcement learning, and anomaly detection. Below, you will find the full descriptions of each experiment, along with their AI area and ML category.

Experiment Name and Description	AI Area	Machine learning category
Energy Consumption Prediction Use neural networks to predict electricity consumption based on historical data and environmental conditions.	Machine Learning	Supervised Learning (Regression)
Fault Detection in the Grid Implement AI models to detect and classify faults in transmission lines based on sensor data.	Machine Learning	Supervised Learning (Classification)
Optimization of Renewable Energy Usage Apply genetic algorithms or neural networks to optimize the distribution of energy from renewable sources.	Optimization / Machine Learning	Reinforcement Learning
Power System Stability Analysis Use deep learning models to predict instability conditions in the grid and anticipate corrective actions.	Deep Learning	Supervised Learning (Regression)
Intelligent Load Control Use AI algorithms to manage switching on and off devices based on demand and energy availability.	Machine Learning	Reinforcement Learning
Wind Power Generation Prediction Develop time series models to predict wind power generation based on weather data.	Machine Learning	Supervised Learning (Regression)
Solar Power Generation Prediction Implement neural networks to estimate photovoltaic energy generation considering solar radiation and temperature.	Machine Learning	Supervised Learning (Regression)
Transformer Anomaly Detection Use anomaly detection algorithms to monitor and detect potential failures in electrical transformers.	Machine Learning	Unsupervised Learning (Anomaly Detection)
Power Quality Classification Apply classification models to detect and label power quality events such as harmonics or voltage fluctuations.	Machine Learning	Supervised Learning (Classification)
AI-Based Microgrid Simulation Implement simulation models to optimize microgrid operation with AI, considering generation sources and demand.	Machine Learning / Simulation	Reinforcement Learning

SMART GRID DIAGRAMS



SMART GRID





SMART GRID

MANUALS

The system includes an experiment manual with a detailed description of all the experiments that we suggest for the system.

Furthermore, the system is supplied complete with a book of approximately 300 pages “EXPERIMENTAL CONCEPTS OF SMART GRID TECHNOLOGY BASED ON DELORENZO SMART GRID”, written by Dr. Pedro Ponce and Dr. Arturo Molina, from the Tecnológico de Monterrey (Mexico).

Hereunder the complete index:dl

1 Electric Circuits

1.1 Frequency-domain analysis

- 1.1.1 Phasors
- 1.1.2 Impedances
- 1.1.3 Phasor Diagrams
- 1.1.4 Phasor Measurement Unit
- 1.1.5 Exercises

1.2 AC Power Analysis

- 1.2.1 Instantaneous Power
- 1.2.2 Average Power
- 1.2.3 Effective Values or RMS Values
- 1.2.4 Apparent Power and Power Factor
- 1.2.5 Complex Power
- 1.2.6 Power Factor Correction
- 1.2.7 Exercises

1.3 Polyphase Circuits

- 1.3.1 Single-phase three-wire systems
- 1.3.2 Balanced three-phase voltages
- 1.3.3 Balanced Y-Y Connection
- 1.3.4 Balanced Y- Δ Connection
- 1.3.5 Balanced Δ - Δ Connection
- 1.3.6 Balanced Δ -Y Connection
- 1.3.7 Unbalanced three-phase systems
- 1.3.8 Power in Three-Phase Systems
- 1.3.9 Exercises

1.4 Harmonics

- 1.4.1 Exercises

1.5 Theoretical problems

References

2 Electric Machinery

2.1 Main electric machinery

- 2.1.1 Generator
- 2.1.2 Transformers
 - 2.1.2.1 Potential transformer
 - 2.1.2.2 Current transformers
- 2.1.3 Power lines
- 2.1.4 Loads
- 2.1.5 Transmission lines
- 2.1.6 Protective devices

2.2 Rotational motion, Newton's law and power relationships

- 2.2.1 Angular position
- 2.2.2 Angular velocity
- 2.2.3 Angular acceleration
- 2.2.4 Torque

2.3 Newton's Law of Rotation

- 2.3.1 Work
- 2.3.2 Power

2.4 The Magnetic Field



SMART GRID

- 2.5 Magnetically coupled circuits**
- 2.6 Electromechanical energy conversion**
- 2.7 Machine Windings**
- 2.8 Winding Inductances**
 - 2.8.1 Synchronous Machine
 - 2.8.2 Induction Machine
 - 2.8.2.1 Load test
 - 2.8.2.1.1 Exercise Generator Load Test
 - 2.8.2.1.2 Exercise Generator No Load Test
 - 2.8.2.2 Locked Rotor Test
- 2.9 Asynchronous Motor**
 - 2.9.1 Equivalent circuit of the induction motor and torque-speed graph
 - 2.9.2 National Electrical Manufacturers Association (NEMA) Design
 - 2.9.3 NEMA breakout Code
- 2.10 Brushless Motor**
 - 2.10.1 Operating principle
 - 2.10.2 Inductance and resistance in the windings
 - 2.10.3 Brushless Exercise
- 2.11 Theoretical problems**

References

- 3 Hydroelectricity**
 - 3.1 Overall characteristics and operation**
 - 3.1.1 Exercises
 - 3.2 Integration with the infinite bus**
 - 3.2.1 Exercises
 - 3.3 Theoretical problems**

References

- 4 Wind Energy**
 - 4.1 Wind turbine basic structure**
 - 4.2 Worldwide Eolic energy production**
 - 4.3 Basics of wind energy**
 - 4.4 Aerodynamics of wind turbines**
 - 4.4.1 Airfoils
 - 4.5 Constant-Speed turbines versus variable-speed ones**
 - 4.6 Wind energy resource**
 - 4.7 Power generation system**
 - 4.7.1 Fixed speed wind turbines
 - 4.7.2 Variable speed wind turbines
 - 4.7.3 Exercises
 - 4.8 Economic factors**

References

- 5 Photovoltaic**
 - 5.1 Introduction**
 - 5.1.1 Grid-connected photovoltaic systems
 - 5.1.2 Stand-alone photovoltaic systems
 - 5.1.2.1 Photovoltaic system directly coupled to DC
 - 5.1.2.2 Photovoltaic systems with energy storage system and battery
 - 5.1.2.3 Photovoltaic system with inverter
 - 5.2 Overall characteristics and operation**
 - 5.2.1 Cell types
 - 5.2.1.1 Basic processes in organic solar cells
 - 5.3 Generation of electrical energy**
 - 5.3.1 Photovoltaic arranges
 - 5.3.1.1 Series connection
 - 5.3.1.2 Parallel connection
 - 5.4 Spectral response**
 - 5.4.1 Example
 - 5.5 Equivalent circuit**
 - 5.6 System Performance**
 - 5.7 Maximum power**



SMART GRID

5.8 Fill Factor

5.9 System degradation and efficiency

5.9.1 Photovoltaic conversion efficiency

5.10 Output of a typical solar photovoltaic Power System

5.10.1 Example

5.11 Storage of electrical energy

5.11.1 Batteries

5.11.2 The structure of power storage devices

5.11.3 Battery Storage

5.11.4 Battery efficiency

5.11.4.1 Battery charge regulators

5.11.5 Example

5.12 Inverters

5.13 Costs

5.13.1 Photovoltaic module prices

5.13.2 Photovoltaic system prices

5.13.3 Levelized cost of energy

5.13.4 Strategies for reducing photovoltaic system prices

5.13.5 Reducing material costs

5.13.6 Improving the manufacturing process

5.13.7 Reducing module shipping costs

5.13.8 Increasing photovoltaic module efficiency

5.13.9 Reducing power electronic costs

5.13.10 Reducing Balance-of-Systems Costs

5.14 Exercises

5.14.1 Energy contribution for different angles of the solar panel

5.14.2 Energy efficiency due to solar panel heat

References

6 Electric Power Transmission Parameters

6.1 Generic structure of a transmission tower

6.2 Transmission line parameters

6.2.1 Electric resistance

6.2.2 Inductance

6.2.2.1 Inductance due to internal flux linkage

6.2.2.2 Inductance due to external flux linkage

6.2.2.3 Total inductance

6.2.2.4 Inductance in point P due to an N conductors' system

6.2.2.5 Inductance in the infinite

6.2.2.6 Inductance of a monophasic system

6.2.2.7 Inductance of a three phase system

6.2.3 Geometric mean radius and geometric mean distance

6.2.4 Inductance of three phase double circuit lines

6.2.5 Capacitance of transmission lines

6.2.5.1 Capacitance of a single phase line

6.2.5.2 Capacitance of a three phase line

6.2.5.3 Effect of earth on the capacitance of conductors

6.2.6 Exercises

6.3 Transmission line mathematical model

6.3.1 Exact ABCD model of a transmission line

6.3.2 Equivalent π circuit

6.3.3 Exercises

6.4 Power flow analysis

6.4.1 Exercises

6.5 Theoretical Problems

6.5.1 Electric Resistance

6.5.2 Three phase bundled conductor impedance

6.5.3 Capacitance of transmission lines

6.5.4 ABCD model

6.5.5 Equivalent π circuit

References

7 Smart Grid



SMART GRID

- 7.1.1 Economic Factors
- 7.1.2 Reliability Factors
- 7.1.3 Environmental
- 7.1.4 Security
- 7.1.5 The Perspective of the Metering Industry

7.2 Exercises

- 7.2.1 Contribution of solar energy
- 7.2.2 Contribution of hydropower
- 7.2.3 Contribution of wind plant

References

8 Renewable Energy

8.1 Energy sources and resources

8.2 Types of Energy

8.3 Types of renewable energies

8.4 Advantages and disadvantages

8.5 Storage

- 8.5.1 Pumped hydro
- 8.5.2 Compressed air
- 8.5.3 Flywheels
- 8.5.4 Batteries
- 8.5.5 Rokkasho-Futamata Wind Farm

8.6 Energy and society

- 8.6.1 Use of energy

8.7 Economics

8.8 Solutions

8.9 Theoretical problems

References

9 Power distribution system, unsymmetrical failures and power system protections

9.1 Types of distribution systems

- 9.1.1 Radial networks
 - 9.1.1.1 Aerial radial networks
 - 9.1.1.2 Subterranean radial networks
- 9.1.2 Ring networks
- 9.1.3 Mesh networks
- 9.1.4 Exercises

9.2 Faults on power systems

- 9.2.1 Symmetrical Components
- 9.2.2 Sequence networks of electric machinery
 - 9.2.2.1 Transformers
 - 9.2.2.2 Transmission lines and rotating machines
- 9.2.3 Coupled circuits for unsymmetrical faults
 - 9.2.3.1 Single line to ground fault
 - 9.2.3.2 Line to line fault
 - 9.2.3.3 Double line to ground
 - 9.2.3.4 Summary of coupled circuits
- 9.2.4 Exercises

9.3 Electric protections

- 9.3.1 Types of faults and relays
- 9.3.2 Relay operation

9.4 Power Line Carrier

9.5 Theoretical problems

- 9.5.1 Thevenin equivalent
- 9.5.2 Types of failures

References

10 APPENDIX 1: Smart grid components



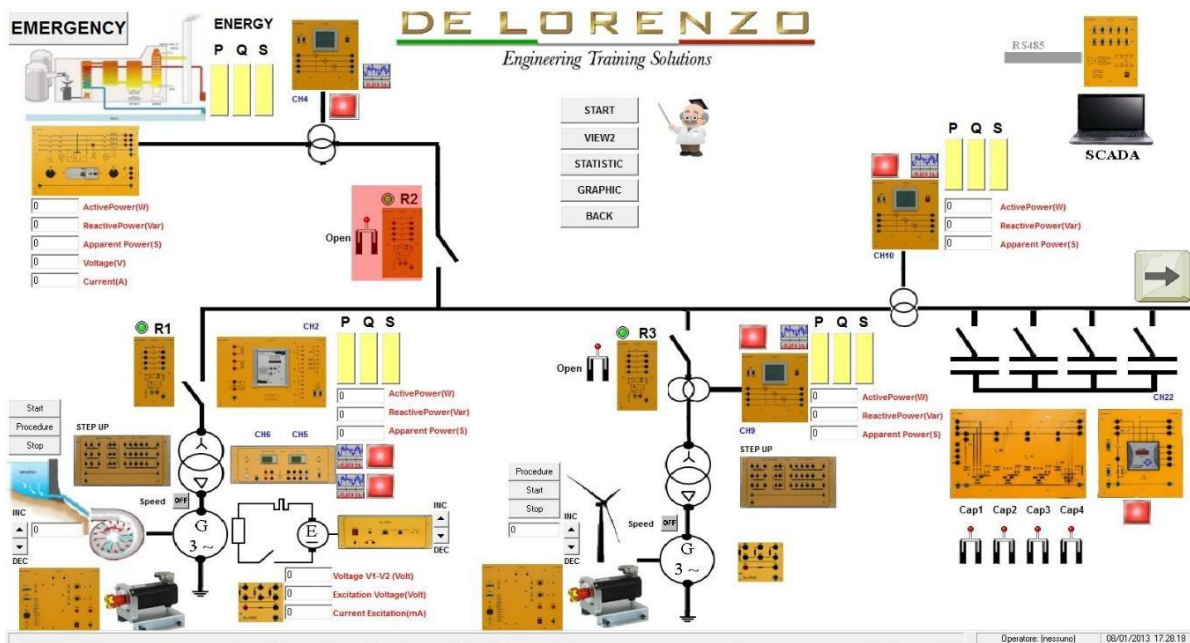
SAMPLE EXERCISE

CONTRIBUTION OF SOLAR ENERGY

Assume that there is demand for energy from a distant point and there is solar energy to be able to be exploited. In this exercise, the student will intervene by reducing the consumption of energy from a plant of old generation, using the surplus energy produced by solar photovoltaic systems.

The reduction of even a minimum of energy absorbed will certainly have an impact on the environmental pollution produced by a plant of the old generation.

1. Set the load DL 1017R to position 2 and close the relay R2 to supply energy coming from the coal plant.



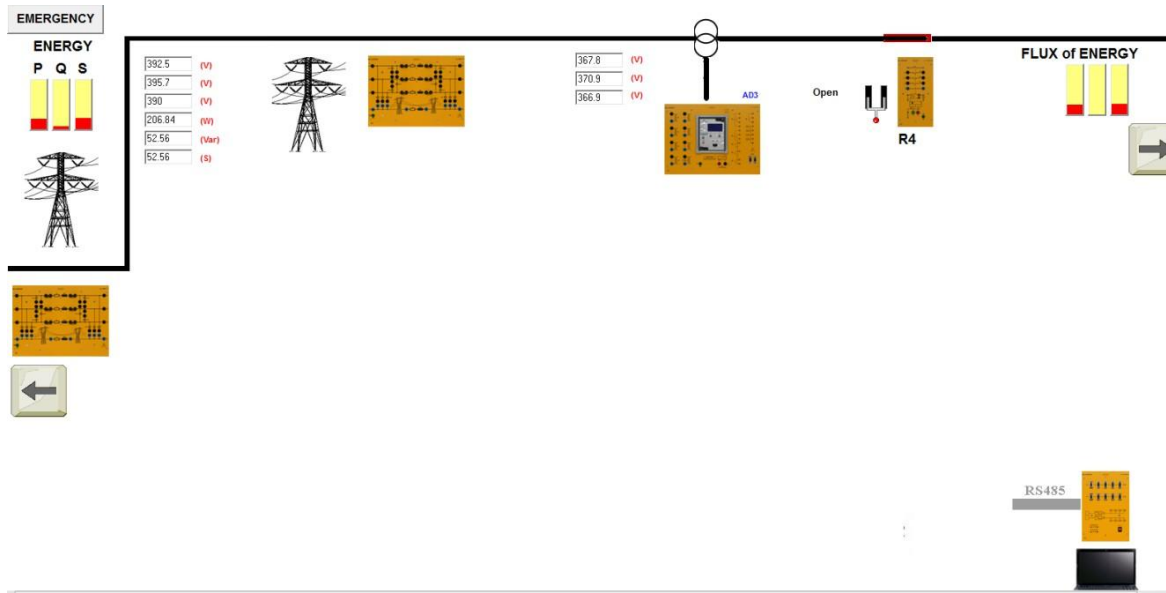
2. Close the relay R4 to transfer energy coming from the plant to the load and observe the power consumption on the module DL 2109T29.

DL 1017R Position	Active power [W]	Reactive power [VAR]
2	207.64	52.32
3	310.00	101.00

In this situation you can see the active power required from the resistive load (DL 1017R) and a few of reactive power required from the primary of the step down transformer.



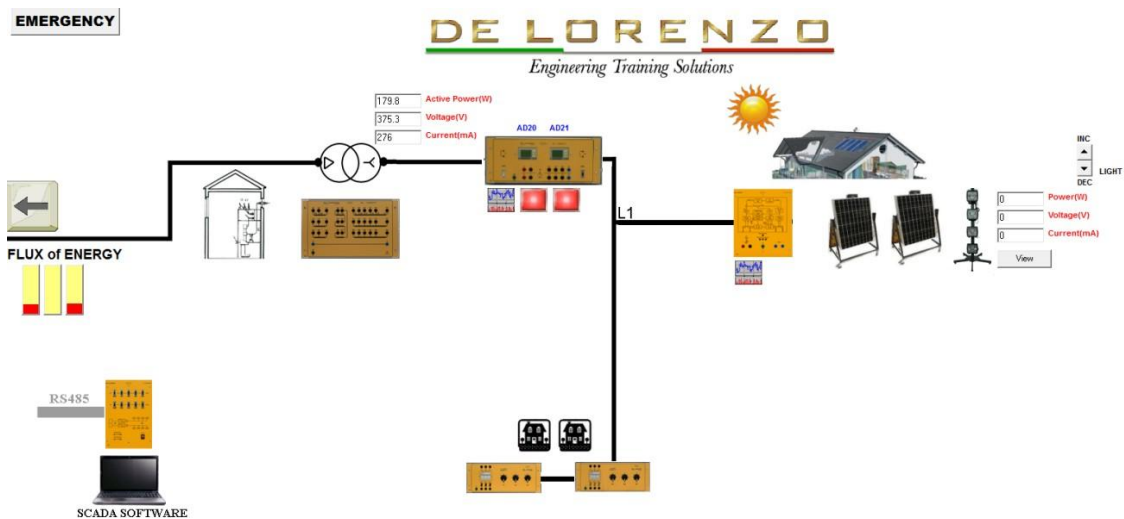
SMART GRID



- Observe the active power consumption indicated by the red arrow after the step-down secondary transformer.

DL 1017R Position	Active power [W]
2	179.9
3	275.1

In this situation, the total energy coming from the coal plant and directed to the load, crossing the long distance, produces a power loss in the transmission line.





SMART GRID

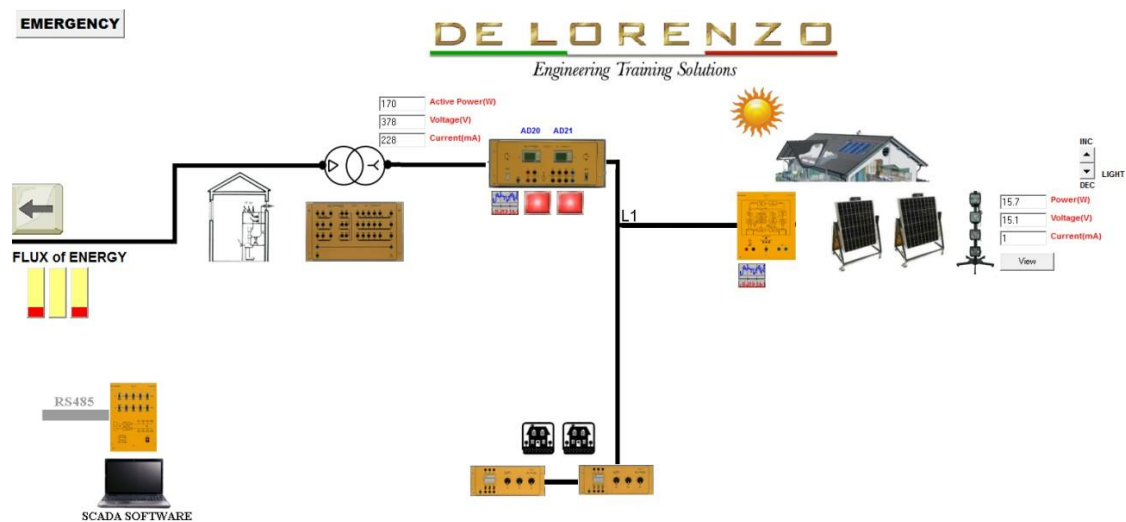
- Increment the sun energy and check the contribution of energy coming from the photovoltaic system plant.

DL 1017R Position	Active power [W]
2	15.7
3	12.3

(with light at 100% and panel in 90°)

The active power coming from the coal plant is going to be reduced and as well then, the reduction of pollution in terms of CO₂. If you convert the reduction of power into a pollution on a large scale, we can make a big contribution to environment.

The reduction of the energy is less if you use artificial lights, but if you orient the photovoltaic panel to the real sun the contribution would be higher.





SMART GRID

DL SGWD-AI - LIST OF MODULES

DL 2108T26	Brushless Controller with Motor	2
DL 1021/4	Squirrel cage three phase asynchronous motor	1
DL 1013A	Base	2
DL 1026P4	Three-Phase Synchronous Machine	1
DL 1017R	Resistive Load	1
DL 1017L	Inductive Load	1
DL 1017C	Capacitive Load	1
DL 2108TAL-CP	Three Phase Supply Unit	1
DL 1067S	Motor Driven Power Supply	1
DL 7901TT	Overhead Line Model – 360 Km	1
DL 7901TTS	Overhead Line Model – 110 Km	1
DL 10065N	Electrical Power Digital Measuring Unit	2
DL 2109T29	Three-Phase Power Meter	3
DL 2108T25	Generator Synchronizing Relay	1
DL 2108T23	Feeder Manager Relay	1
DL 2108T02	Power Circuit Breaker	3
DL 2108T02A	Power Circuit Breaker	1
DL 2108T19	Reactive Power Controller	1
DL 2108T20	Switchable Capacitor Battery	1
DL 9031	Circuit Breaker	1
DL 9013G	Inverter Grid	1
PFS-85	Photovoltaic Solar Panel	1
DL SIMSUN	Lamps For the Photovoltaic Solar Panel	1
DL WINDSIM	Wind Simulator	1
DL HUBRS485F	Modbus Communication Hub	1
DL SCADA3+	Software Scada	1
DL AI-MODULE	Artificial intelligence module	1
DL 1080TT	Three-Phase Transformer	3
DL 1155SGWD	Kit Of Connecting Leads	1
DL T12090	120x90 Working Bench	3
DL T06090	60x90 Working Bench	1
DL A120-3M-LED	Frame	3
DL PCGRID	All-In-One Personal Computer	1
DL 2100TTI	Three-Phase Transformer	1
DL 1196	Holder For Leads	1



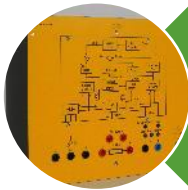
SMART GRID

OPTIONS:

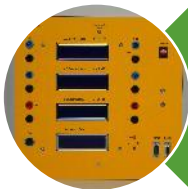
- **Microgrid wind energy** - It allows adding a microgrid wind energy system in parallel to the photovoltaic solar system at the user end of the system – **ordering code: DL SGWD-W-AI**



A micro-grid wind turbine powered by a servo-motor simulating the action of the wind.



A single phase grid-tie inverter that feeds power from the turbine into the mains



Dedicated instrument provide the information needed for the characterization of the wind system.

Additional modules for DL SGWD-AI-W, with Microgrid wind plant

DL T12090_SK	Multipurpose table (120x90x80cm) basic version with Shuko socket	1
DL A120-3M-LED	Frame with 3 levels version with led lamps	1
DL 9030	Energy measurement module	1
DL 9032	Network distributor module	1
DL WTS-CTRL750	Control module for brushless motor 750W	1
ANEMOMETER	Anemometer module	1
DL WTS-3	Wind Turbine Simulator	1
DL 9017	Lamps module	1
DL 9013G3D	Inverter grid module 300W IN 3ph. 12Vac with braking resistance	1
DL 9027	Measurement module for wind generator	1
DL 9031	Circuit Breaker	1