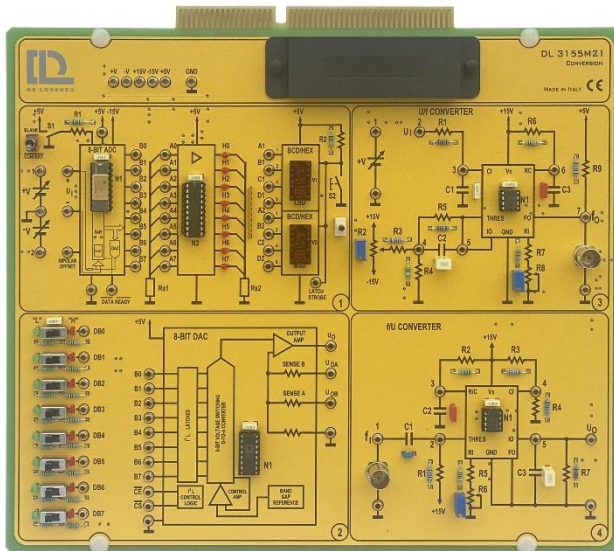


CONVERSION



DL 3155M21

The design and construction of electronic circuits to solve practical problems is an essential technique in the fields of electronic engineering and computer engineering.

With this board the students can study the operating principles of the A/D, D/A, f/v and V/f converters.

THEORETICAL TOPICS

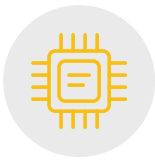
- Analogue and digital signals
- Unipolar codes
- Bipolar codes
- The A/D conversion
- Step A/D converters
- A/D converter of parallel or flash type
- Simple slope A/D converter
- Double slope A/D converter
- The D/A conversion
- Weighed resistance D/A converter
- D/A converter with R-2R network
- Voltage/frequency conversion
- Voltage/frequency conversion with slope method
- Voltage/frequency conversion with charge balance method

CIRCUIT BLOCKS

- Analogue to digital converter
- Digital to analogue converter
- Voltage to frequency converter
- Frequency to voltage converter

Complete with theoretical and practical manual.

Dimensions of the board: 297x260mm



ELECTRONICS



CAI SOFTWARE:

Each board of the TIME system can be supplied complete with a Student Navigator software that allows students to perform their learning activities through a Personal Computer, without the need for any other documentation.

Ordering code: please add SW after the code of the board (i.e. DL 3155M21SW)

Required:

POWER SUPPLY NOT INCLUDED

Base frame with power supply (completed with connecting cables):

- **DL 3155AL3** - Base frame with power supply and interface to pc and virtual instrumentation
- **DL 3155AL2** - Base frame with power supply and interface to pc

Basic power supply (connecting cables not included):

- **DL 2555ALF** - DC power supply $\pm 5 \pm 15$ 0 ± 15 Vdc, 1A
- **TL 3155AL2** - Connecting cables

Choosing this power supply, for the execution of the experiments, it is normally required the use of an oscilloscope and two multimeters.

