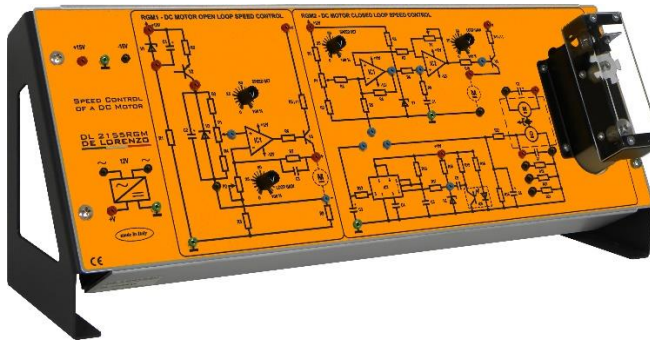




Speed Control of a DC Motor



DL 2155RGM

This board has been designed to highlight the speed control techniques of a direct current motor.

The board is basically divided in two sections: the first one allows the study of the open loop speed control, while the second section deals with an actual closed loop speed control of the system.

The group under test, composed of a motor, a dynamometer and a speed optical transducer, is placed on the board.

The board is supplied complete with a set of stackable, plug-in cables of suitable lengths and colours and with a training manual.

Experiments

- Study of open loop and closed loop speed control systems
- Analysis of the static and dynamic operation of an open loop controller
- Analysis of the static and dynamic operation of a closed loop controller
- Measurement of the speed through an optical transducer connected to a F/V converter or through a tachogenerator

Necessary power supply:

- 12Vac, 2A, 50/60Hz
- 15Vdc, 300mA